



PASSION AT WORK

# SOBHA CITY

Chintels Metropolis, Sector-108  
Gurgaon

FLOOR PLANS

SOBHA CITY  
**THE FLOOR PLANS**

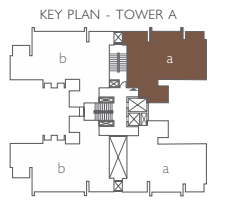
TOWERS A1, A2, A3, A4

TENTATIVE SBA - 128 SQ.MT. (1381 SQ.FT.)



**UNIT TYPE 'a'**

- ..... 2 BEDROOMS
- ..... LIVING AND DINING
- ..... KITCHEN
- ..... 2 BALCONIES
- ..... 2 TOILETS
- ..... UTILITY SPACE



**SOBHA CITY**  
**THE FLOOR PLANS**

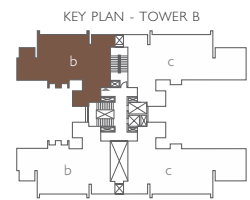
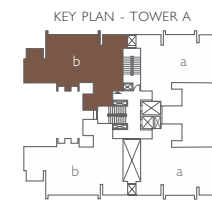
TOWERS A1, A2, A3, A4 & B1, B2, B3, B4

TENTATIVE SBA - 158 SQ.MT. (1711 SQ.FT.)



**UNIT TYPE 'b'**

- ..... 3 BEDROOMS
- ..... LIVING AND DINING
- ..... KITCHEN
- ..... 2 BALCONIES
- ..... 3 TOILETS
- ..... UTILITY SPACE



SOBHA CITY  
**THE FLOOR PLANS**

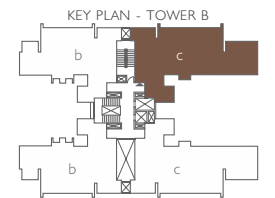
TOWERS B1, B2, B3, B4

TENTATIVE SBA - 186 SQ.MT. (2003 SQ.FT.)



**UNIT TYPE 'c'**

- ..... 3 BEDROOMS
- ..... LIVING AND DINING
- ..... KITCHEN
- ..... FAMILY LOUNGE / LOBBY
- ..... 2 BALCONIES
- ..... 3 TOILETS
- ..... POWDER ROOM
- ..... UTILITY SPACE



**SOBHA CITY**  
**THE FLOOR PLANS**

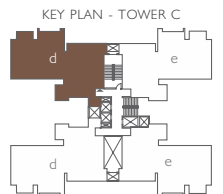
TOWERS C1, C2, C3, C4

TENTATIVE SBA - 192 SQ.MT. (2072 SQ.FT.)



**UNIT TYPE 'd'**

- ..... 3 BEDROOMS
- ..... MASTER BEDROOM WITH WALK-IN CLOSET
- ..... LIVING AND DINING
- ..... KITCHEN
- ..... 2 BALCONIES
- ..... 3 TOILETS
- ..... POWDER ROOM
- ..... UTILITY SPACE



SOBHA CITY  
**THE FLOOR PLANS**

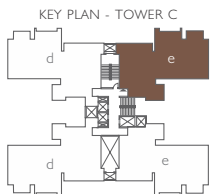
TOWERS C1, C2, C3, C4

TENTATIVE SBA - 217 SQ.MT. (2343 SQ.FT.)



**UNIT TYPE 'e'**

- ..... 3 BEDROOMS
- ..... MASTER BEDROOM WITH WALK-IN CLOSET
- ..... LIVING AND DINING
- ..... KITCHEN
- ..... UTILITY ROOM
- ..... 2 BALCONIES
- ..... 3 TOILETS
- ..... POWDER ROOM
- ..... UTILITY SPACE





#### **OFFICE ADDRESS**

Sobha Limited  
5th Floor, Rider House, Plot No 136-P  
Sector - 44, Gurgaon - 122003, Haryana

#### **SITE ADDRESS**

Sobha Sales Gallery  
Chintels Metropolis, Sector - 108  
Gurgaon - 122017, Haryana

**T** +91 124 4706666  
**E** sales.ncr@sobha.com  
**W** www.sobhacity.com

**SOBHA**  
**CITY**

Chintels Metropolis, Sector-108  
Gurgaon

#### Disclaimer

1. The sizes / shapes / positions of openings, ducts, balconies and landscape are subject to change.
2. Room sizes indicated are structural sizes and actual sizes may vary due to finishes.
3. Areas mentioned are subject to change after finalization of services and structural design.
4. The furniture shown in the drawing is only to indicate the space available and the likely position of electrical points.

All plans, specifications, artistic renderings and images as shown in this document are only indicative and are subject to change as may be decided by the company or directed by any competent authority in the best interests of the development. Soft furnishing, furniture and gadgets do not form a part of the offering.